

! WARNING

- **BURN HAZARD.** The tip of the 3Doodler can become extremely hot. DO NOT touch the tip, the parts near the tip, or any melted plastic, or you may be severely burned! DO NOT allow the tip near or in contact with flammable materials. Inform others in the area that the unit is hot and should not be touched. Unplug and set the slide switch to OFF when not in use or before storing. Allow the tip to cool completely after use and before storing. The hot tip may damage painted surfaces, plastics and cloth if left in direct contact with these materials.
- **BURN HAZARD.** The cleaning tool can become extremely hot. DO NOT touch the metal part of the cleaning tool after using it to clean your 3Doodler, or you may be severely burned!
- If the 3Doodler is emitting black or brown smoke, cease using the pen immediately, unplug the pen, allow to cool, and then store it away safely. Failure to do so will increase the risk of fire. Please contact us immediately in such circumstances.
- **ADULT USE ONLY. KEEP OUT OF REACH OF CHILDREN.**



WARNING: DO NOT use the 3Doodler near bathtubs, showers, basins or other vessels containing water. This could result in death due to electric shock.



The 3Doodler should only be used with ABS or PLA plastic filament approved by us. Misuse of your 3Doodler, setting your pen to the wrong heating temperature, and/or use of non-approved plastics or other materials may result in damage to your pen or injury to you, and will void your warranty. Injuries to the user may include, but are not limited to, harm sustained from inhaling substances that are not suitable for heating; or burns from flammable materials used in the 3Doodler.

! NOTICE**SNIP THOSE ENDS!**

After removing plastic from the 3Doodler, cut and remove any partially melted plastic before re-feeding on both ends of the plastic strand. This will reduce any blockages or plastic clogging issues.



Do not pull plastic from the back of the 3Doodler (other than as directed).



When switching from PLA to ABS plastic, the presence of any residual PLA in the pen's heating chamber may cause a slight amount of smoke to emit from the pen. This is due to the higher heating temperature applied to ABS plastic. PLA is carbon neutral and emits no toxic fumes when over-heated.

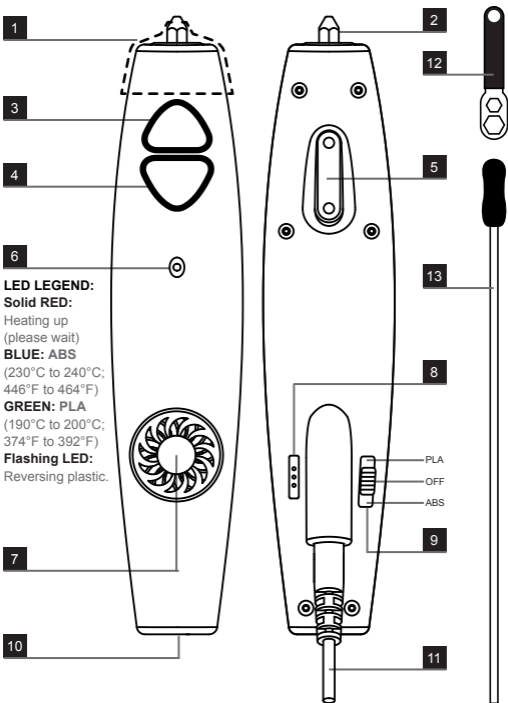
IT'S TIME TO 3DOODLE!

You are now the proud owner of a 3Doodler, the world's first 3D drawing pen. The 3Doodler puts the power of creation in your hands and allows you to draw real objects quickly and easily!

#WhatWillYouCreate?™

To find great ideas for what you can create, as well as tips, tricks & free downloadable stencils, please visit our community website at: www.the3Doodler.com/Community

GETTING TO KNOW YOUR 3DOODLER



Actual product may vary from the image found in this document

- | | |
|---|--|
| 1 Removable Cover | 7 Cooling Fan |
| 2 Nozzle | 8 3-Pin Control Port |
| 3 Extrusion Speed Control (FAST) | 9 ON/OFF Switch & ABS/PLA Control |
| 4 Extrusion Speed Control (SLOW) | 10 Plastic Loader |
| 5 External Mount | 11 Power Cord |
| 6 LED Indicator | 12 Nozzle Removal Tool |
| | 13 Cleaning Tool |

ALWAYS 3DOODLE IN A WELL VENTILATED SPACE

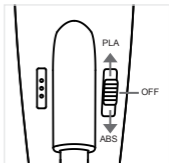
USING YOUR 3DOODLER

Step 1: Connect your 3Doodler to the power adapter

Connect the power adapter to the back of the 3Doodler and plug it into a power source.

Step 2: Turn on the pen and select your plastic

Turn the pen on by selecting the correct heating temperature for the type of plastic you are using. Set the slide switch to ABS for ABS plastic, or PLA for PLA plastic.



Step 3: Allow your 3Doodler to heat up before loading plastic

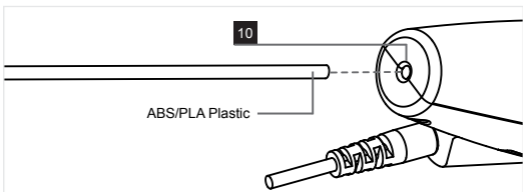
The 3Doodler takes approximately 1 minute to heat up. During that time the LED indicator will be **RED** and it will not be possible to use the pen. Once the correct melting temperature is reached and the pen is ready, the LED indicator will change to **BLUE (ABS)** or **GREEN (PLA)**.

BLUE = ABS (heating range between 230°C and 240°C; or 446°F and 464°F)

GREEN = PLA (heating range between 190°C and 200°C; or 374°F and 392°F)

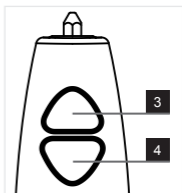
Step 4: Load the pen

Load the plastic into the plastic loader **10** at the back of the pen, feeding it down the tube until you feel it gripped by the pen.

**Step 5: Extrude/select your speed**

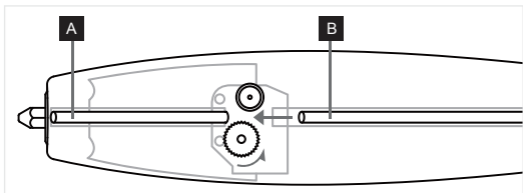
Press and hold the button for the desired extrusion speed (**FAST 3** or **SLOW 4**) and wait for plastic to emerge from the pen tip. Releasing the button will cause the pen to stop extruding plastic.

If, while pressing the extrusion button the LED changes to red, simply continue to hold the button down until the LED changes to blue or green (as applicable). This pause in extrusion is to allow the 3Doodler to reach the correct melting temperature.



NOTE: After 5 minutes of inactivity the 3Doodler's heating system will automatically power down. You will need to press one of the buttons OR toggle the switch off and then on again to continue use.

If the plastic is not extruding, it may be because the existing plastic **A** is too short or has fed beyond the gearbox, and you will not be able to reverse it. Please use a new strand of plastic **B** to feed the remaining plastic through the pen.

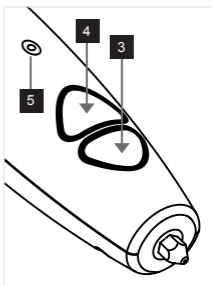
**Step 6: Unload your plastic/reverse****To unload the plastic:**

1. Ensure that the device is still turned on at the correct temperature required for the type of plastic being used:

ABS = BLUE LED indicator
PLA = GREEN LED indicator

2. Hold down **BOTH** the **FAST 3** and **SLOW 4** speed buttons at the same time. The LED indicator **5** will flash.

3. The plastic strand will reverse out of the back of the 3Doodler. When it stops moving, you can pull it out gently. Don't forget to snip the end!



NOTE: Before switching the type of plastic loaded in the pen, you must be sure that there is no residual plastic remaining in the pen's heating chamber. Do this by turning the pen to the **ABS** setting (**BLUE LED**) and pressing either of the fast or slow extrusion buttons to extrude any remaining plastic.

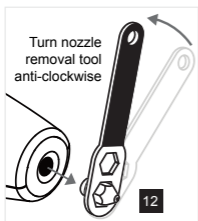
Step 7: Power down

To safely turn the pen off, move the sliding switch to the **OFF** position. Allow the pen to cool completely before storage.

NOTE: Your 3Doodler is a sturdy and awesome tool, but like any mechanical device it needs a break now and then. We suggest giving it some downtime after two hours of continuous use (just 30mins or so).

TROUBLESHOOTING AND CLEANING THE PEN

If the extrusion of plastic has slowed down or stopped altogether, add a new strand into the back of the 3Doodler and resume extruding. If plastic still doesn't come out of the pen, give the strand a gentle push to try to resolve the blockage.

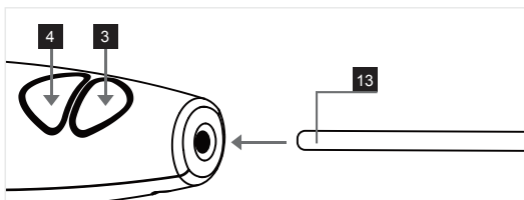


1. Ensure the LED light is BLUE or GREEN before starting this process

2. Start by using the nozzle removal tool **12** and unscrew the nozzle anti-clockwise while the pen is hot. Please be careful not to touch the nozzle!

3. Once you have removed the nozzle, hold down both the FAST **3** and SLOW **4** speed buttons at the same time to set the pen in reverse. While holding down both buttons, insert the cleaning tool **13** through the front end of the pen and gently push out any excess plastic, removing it from the back of the pen.

4. Turn the pen off and allow it to cool down a little, but don't tighten it fully. Screw the nozzle on clockwise a few turns, but don't tighten it yet. Turn the pen back on; once it's warm, tighten the nozzle with the nozzle tool. Make sure it's on firmly, but don't force it.



SPECIFICATIONS

Output Power: 24W
Output Voltage: 12V
Input Voltage: 12V

Specifications are subject to change and improvement without notice.

CARE & MAINTENANCE

For care and maintenance information, and more advice on how to use your 3Doodler please refer to our website: the3Doodler.com
To troubleshoot visit: the3Doodler.com/trouble-shooting

LIMITED WARRANTY

For more details on your limited warranty:
the3Doodler.com/warranty



For 3Doodler's Terms and Conditions and other notices please refer to our website: the3Doodler.com/terms-and-conditions

Patent Pending

THE 3DOODLER IS NOT A TOY FOR CHILDREN.
ADULT USE ONLY. KEEP OUT OF REACH OF CHILDREN.

ALWAYS USE THE PROTECTIVE COVER PROVIDED WITH YOUR 3DOODLER.



This marking indicates that this product should not be disposed of with other household wastes. To prevent possible harm to the environment or human health from uncontrolled waste disposal, recycle it responsibly to promote the sustainable reuse of material resources.

3Doodler and "What Will You Create?" are trademarks of WobbleWorks, Inc.

For more information/customer service please contact us at www.the3Doodler.com/contact